

## Volvo 8x4 Tridem Fassi F800-6 Jip-6 Winch!

### Beschreibung

Volvo FH 540 8x4.

Year: 2013.

Milage: 276.746 km.

Automatic.

Weight: 20.355 kg.

Max weight: 42.500 kg.

Axle load:

1: 9000 kg.

2: 13.000 kg.

3: 13.000 kg.

4: 7500 kg.

Airconditioning.

Retarder / Intarder.

Nightheater.

Fridge.

Sleeper cabin 1 bed.

Electrical operated windows and mirrors.

Radio CD.

On the back airsuspension.

Digital tacho.

Leahter seats.

Hubreduction.

Sliding 5th wheel.

5th wheel height: 1400 mm

4th axle lift + steering axle.

Euro 5 Ad Blue.

Wheelbase:

1-2: 3700 mm.

1-3: 5050 mm.

1-4: 6400 mm.

Tyres:

1: 385/65R22,5 80%.

2: 295/80R22,5 60%.

3: 295/80R22,5 60%.

4: 385/65R22,5 70%.

Fassi F800 RA 2.26 HE-Dynamic.

Year: 2013.

6 x hydr. extendable.

Jip 6 x hydr. extendable.

5 point outriggers.

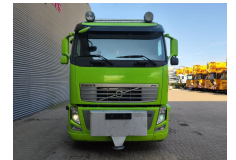
Frontleg - frontabstutzung.

Winch.

Radio Remote Control.

ID NR: 408.

The General Terms and Conditions of Heinhuis are applicable to all adverts, offers and quotations by Heinhuis, all agreements entered into by Heinhuis and the negotiations preceding them. By any form of response you accept the applicability of the General Terms and Conditions of Heinhuis



# Gebr. Heinhuis

T.: [+31 \(0\) 546 480 520](tel:+31(0)546480520)

E.: [info@gebrheinhuis.com](mailto:info@gebrheinhuis.com)

Darwin 16

7609 RL, Almelo

Nederland

and you declare that you have taken note of these General Terms and Conditions. Our prices are export netto prices.