

MAN 54.480 10x4 - Euro 6 - Cifa K52L - 52 Meter!

Description

MAN TGS 54.480 10x4.

Year: 2016.

Milage: 217.549 km.

Manual gearbox 8 gears.

Weight: 48.020 kg.

Max weight: 54.000 kg.

Axle load:

1: 9000 kg.

2: 9000 kg.

3: 13.000 kg.

4: 13.000 kg.

5: 10.000 kg.

Euro 6 Ad Blue.

Alcoa.

Hubreduction.

1st, 2nd and 5th axles steering axles.

Steelsuspension.

Intergrated radio CD.

Airconditioning.

Wheelbase:

1-2: 1750 mm.

1-3: 4700 mm.

1-4: 6100 mm.

1-5: 7500 mm.

Retarder / Intarder.

Electrical operated windows and mirrors.

Digital tacho.

Tyres:

1: 385/65R22,5 70%.

2: 385/65R22,5 70%.

3: 315/80R22,5 70%.

4: 315/80R22,5 70%.

5: 385/65R22,5 70%.

Cifa K52L - HP1808ECX.

Year: 2015.

Hours: 3061.

Max theoretical output: 180 m³/h.

Max working range:

- Vertical: 52.0 meter.

- Horizontal: 46.8 meter.

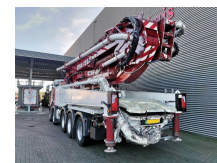
2 x Remote Control.

Dutch Quality!

Very Good Condition!

ID NR: 30.

The General Terms and Conditions of Heinhuis are applicable to all adverts, offers and quotations by Heinhuis, all agreements entered into by Heinhuis and the negotiations



Gebr. Heinhuis

T.: [+31 \(0\) 546 480 520](tel:+31(0)546480520)

E.: info@gebrheinhuis.com

Darwin 16

7609 RL, Almelo

Nederland

preceding them. By any form of response you accept the applicability of the General Terms and Conditions of Heinhuis and you declare that you have taken note of these General Terms and Conditions. Our prices are export netto prices.