

Volvo 10x4 Euro 6 Stetter 15 Kub!

Description

Water tank: Yes

Volvo FMX 420 10x4.

Year: 2017.

Milage: 183.942 km.

Automatic.

Weight: 17.365 kg.

Max weight: 49.000 - 53.000 kg.

Axle load:

1: 10.000 kg.

2: 10.000 kg.

3: 11.500 kg.

4: 11.500 kg.

5: 10.000 kg.

Multifunctional steering wheel. Intergrated Radio CD.

Camera.

Airconditioning.

Electrical operated windows and mirrors.

Wheelbase:

1-2: 1900 mm.

1-3: 4600 mm.

1-4: 5900 mm.

1-5: 7700 mm.

On the back airsuspension.

1st, 2nd and 5th axles steering axles.

5th axle liftaxle.

Euro 6 Ad Blue.

Central greasing system.

Tyres:

1: 385/65R22,5 80%.

2: 385/65R22,5 80%.

3: 315/80R22,5 80%.

4: 315/80R22,5 80%.

5: 385/65R22,5 80%.

Stetter 15 Kub mixer.

Clean water tank.

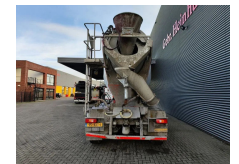
5 Pieces available!

NL Truck!

Dutch quality!

ID NR: 38.

The General Terms and Conditions of Heinhuis are applicable to all adverts, offers and quotations by Heinhuis, all agreements entered into by Heinhuis and the negotiations preceding them. By any form of response you accept the applicability of the General Terms and Conditions of Heinhuis and you declare that you have taken note of these General



Gebr. Heinhuis

T.: [+31 \(0\) 546 480 520](tel:+31(0)546480520)

E.: info@gebrheinhuis.com

Darwin 16

7609 RL, Almelo

Nederland

Terms and Conditions. Our prices are export netto prices.