

Ruthmann T540 Winch 4x4 MAN TGS 26.360 6x4

Description

MAN TGS 26.360 6x2/4.

Year: 2015.

Milage: 319.402 km.

Manual gearbox 8 gears.

Weight: 25.470 kg.

Max weight: 26.000 kg.

Axle load:

1: 9000 kg.

2: 11.500 kg.

3: 7500 kg.

Multifunctional steering wheel.

Engine brake.

Airconditioning.

Nightheater.

1st axle hydrodrive.

Fridge.

Audioplayer with Radio CD.

Sleeper cabin 1 bed.

On the back airsuspension.

Electrical operated windows and mirrors.

Digital tachometer.

3rd axle steering axle.

Wheelbase:

1-2: 5000 mm.

1-3: 6300 mm.

Euro 6 Ad Blue.

Ringfeder trailer coupling.

Tyres:

1: 385/65R22,5 80%.

2: 315/80R22,5 80%.

3: 385/65R22,5 80%.

Ruthmann T540.

Year: 2014.

Max capacity basket: 600 kg / 7 persons + 40 kg.

Max lateral force: 400 N.

Max wind speed: 12,5 m/s.

Max permitted tilt: 2 degree.

4 point outriggers.

Widened basket.

Electrical function in basket.

Rotated basket.

Max working height: 54 meter.

Ruthmann MW300 Hydraulic winch!

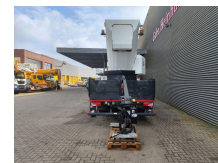
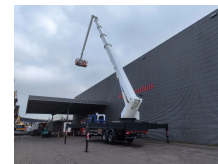
Capacity: 300 kg.

Cable length: 54 meter.

NL Truck!

ID NR: 48.

The General Terms and Conditions of Heinhuis are applicable



Gebr. Heinhuis

T.: [+31 \(0\) 546 480 520](tel:+3120546480520)

E.: info@gebrheinhuis.com

Darwin 16

7609 RL, Almelo

Nederland

to all adverts, offers and quotations by Heinhuis, all agreements entered into by Heinhuis and the negotiations preceding them. By any form of response you accept the applicability of the General Terms and Conditions of Heinhuis and you declare that you have taken note of these General Terms and Conditions. Our prices are export netto prices.